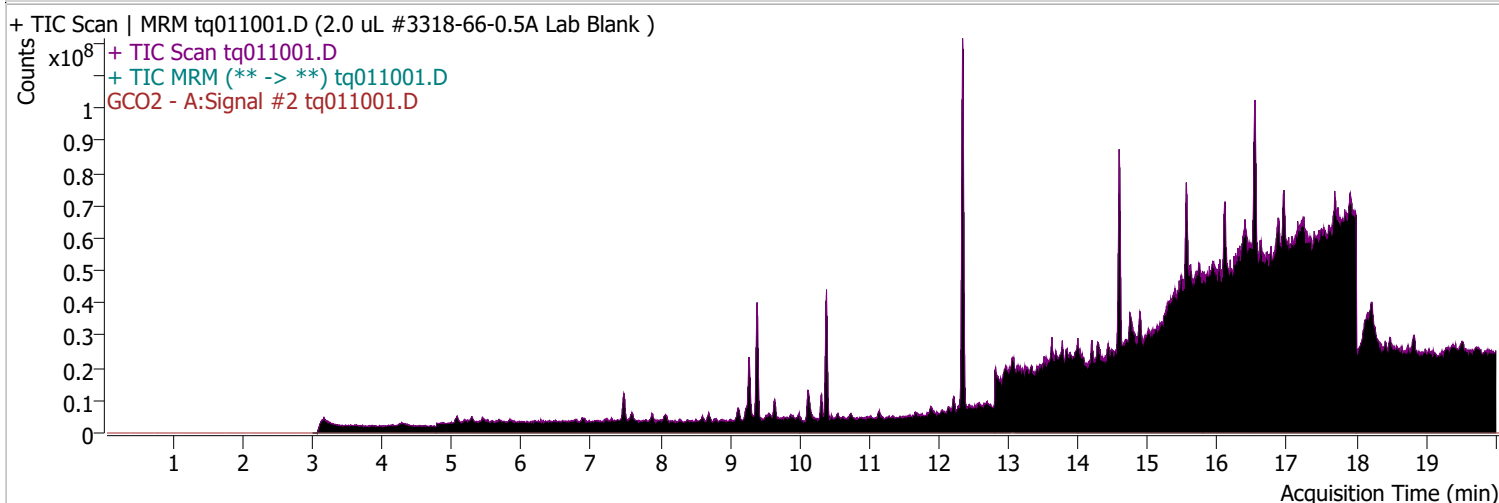
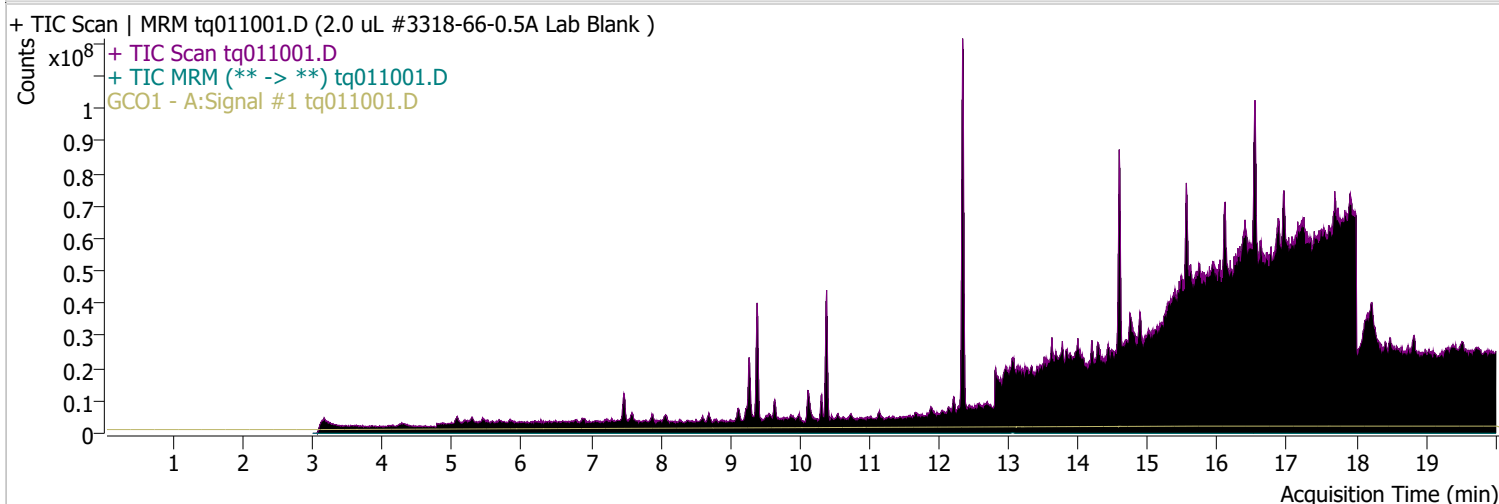
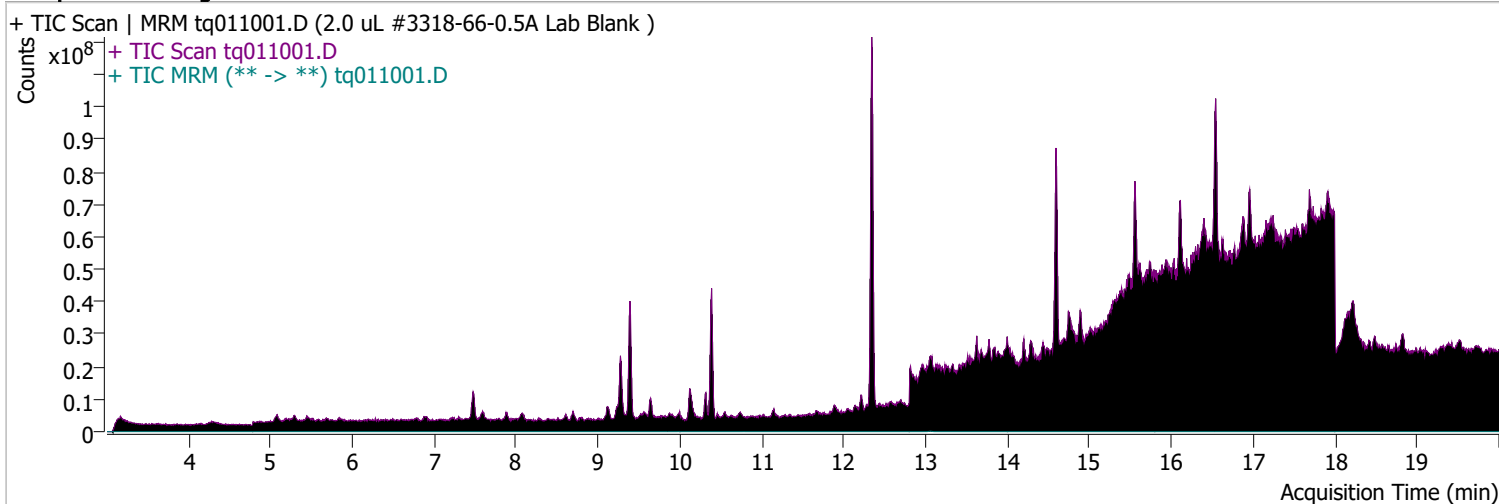


# Quantitative Analysis Sample Report

Batch Path	D:\MassHunter\GCMS\1\data\10jan23\QuantResults\10jan23.batch.bin		
Analysis Time	1/18/2023 2:24 PM	Analyst Name	TAI\us32_usr_ins22923
Report Time	1/18/2023 2:34:56 PM	Reporter Name	TAI\us32_usr_ins22923
Last Calib Update	1/3/2023 2:39 PM	Batch State	Processed
Quant Batch Version	10.1	Quant Report Version	10.1
Acq. Time	1/10/2023 8:07 AM	Data File	tq011001.D
Sample Type	Sample	Sample Name	2.0 uL #3318-66-0.5A Lab Blank
Dilution	1	Acq. Method	tq22m1227

## Sample Chromatogram

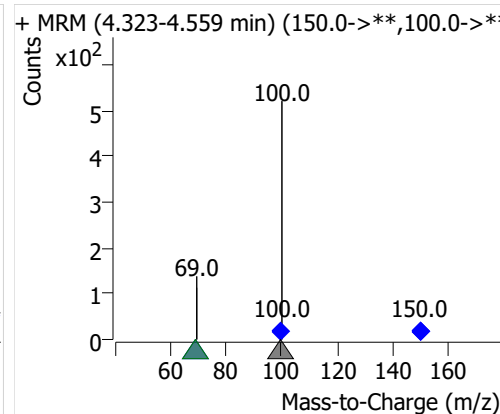
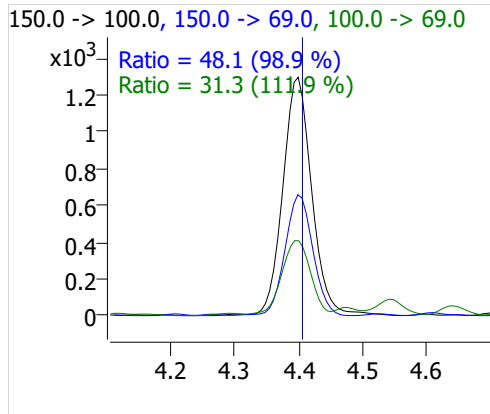
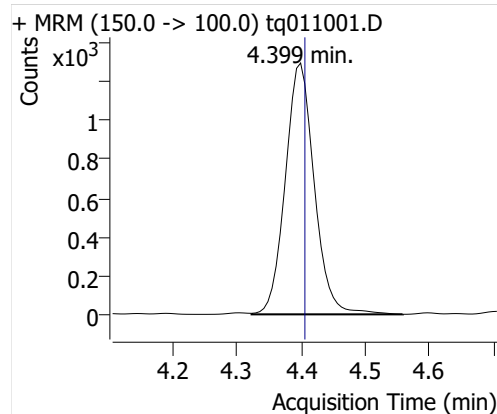


Compound	ISTD	RT	Resp.	ISTD Resp.	Resp. Ratio	Final Conc	Units
PFBA	6:2 FTOH-C13	4.399	4072	52517	0.0775	0.0231	ng

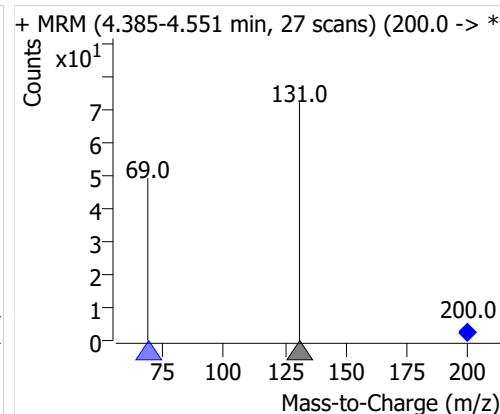
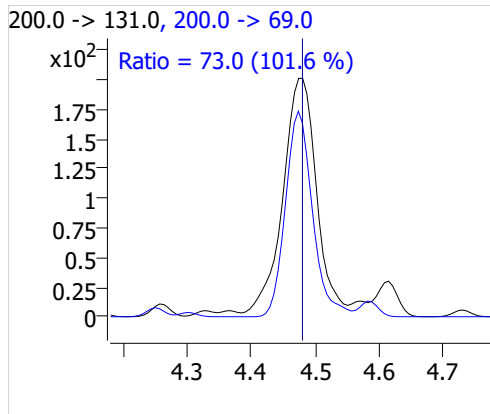
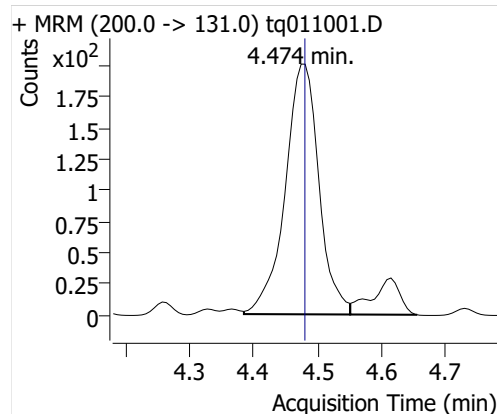
# Quantitative Analysis Sample Report

Compound	ISTD	RT	Resp.	ISTD Resp.	Resp. Ratio	Final Conc	Units
PFPeA	6:2 FTOH-C13	4.474	734	52517	0.0140	0.0047	ng
PFHxA	6:2 FTOH-C13	4.632	147	52517	0.0028	0.0020	ng
PFHpA	6:2 FTOH-C13	4.968	159	52517	0.0030	0.0032	ng
PFOA	6:2 FTOH-C13	5.341	483	52517	0.0092	0.0152	ng

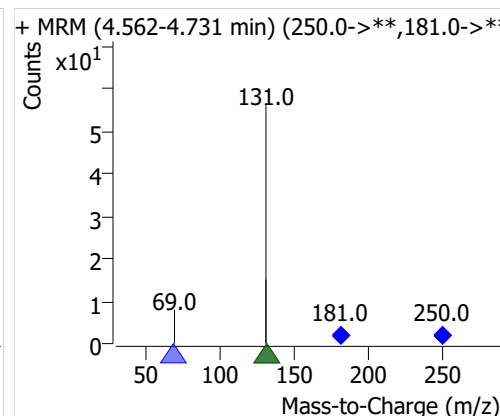
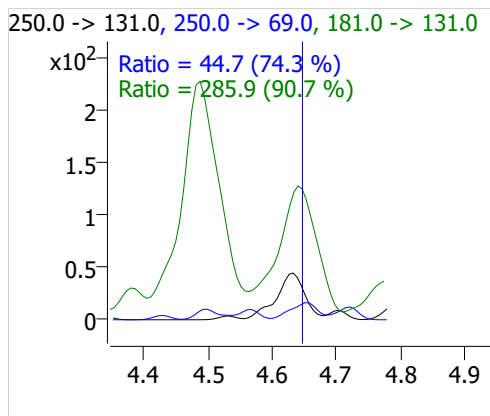
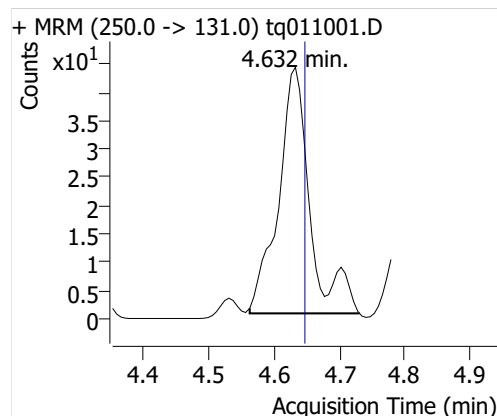
## PFBA



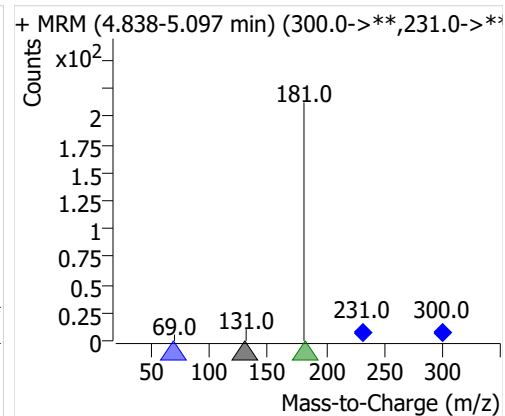
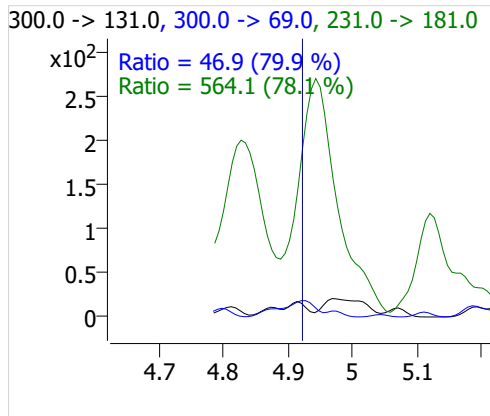
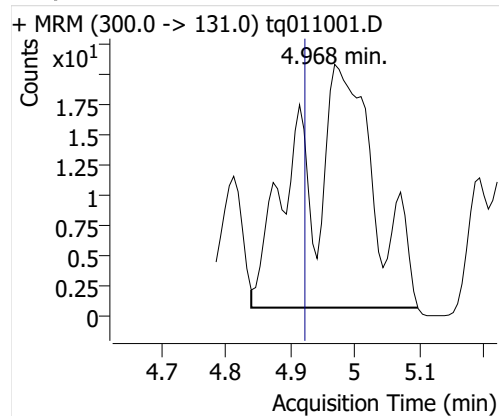
## PFPeA



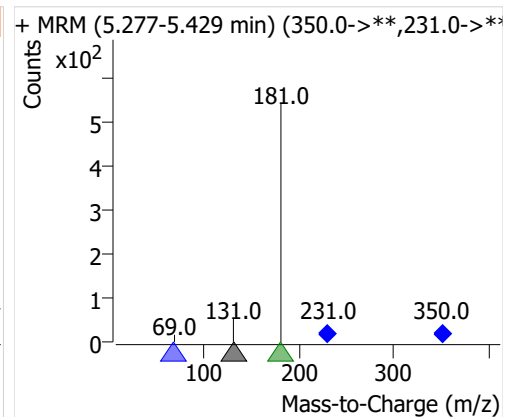
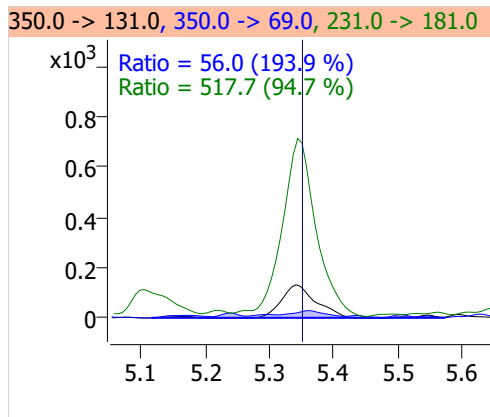
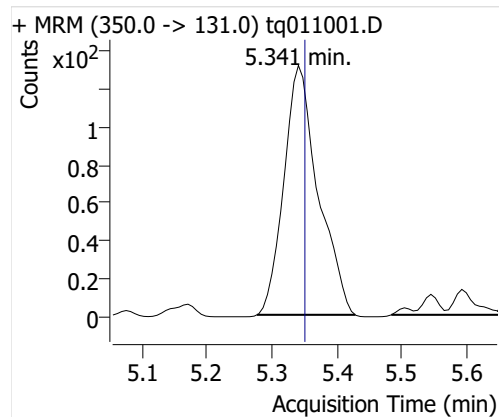
## PFHxA



## PFHpA



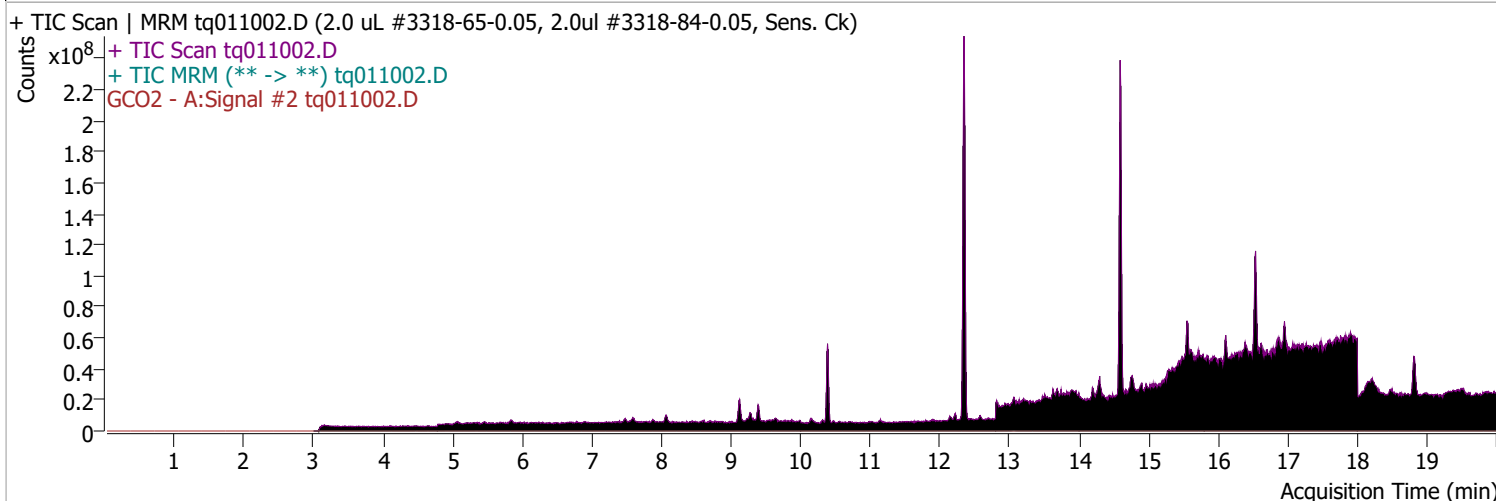
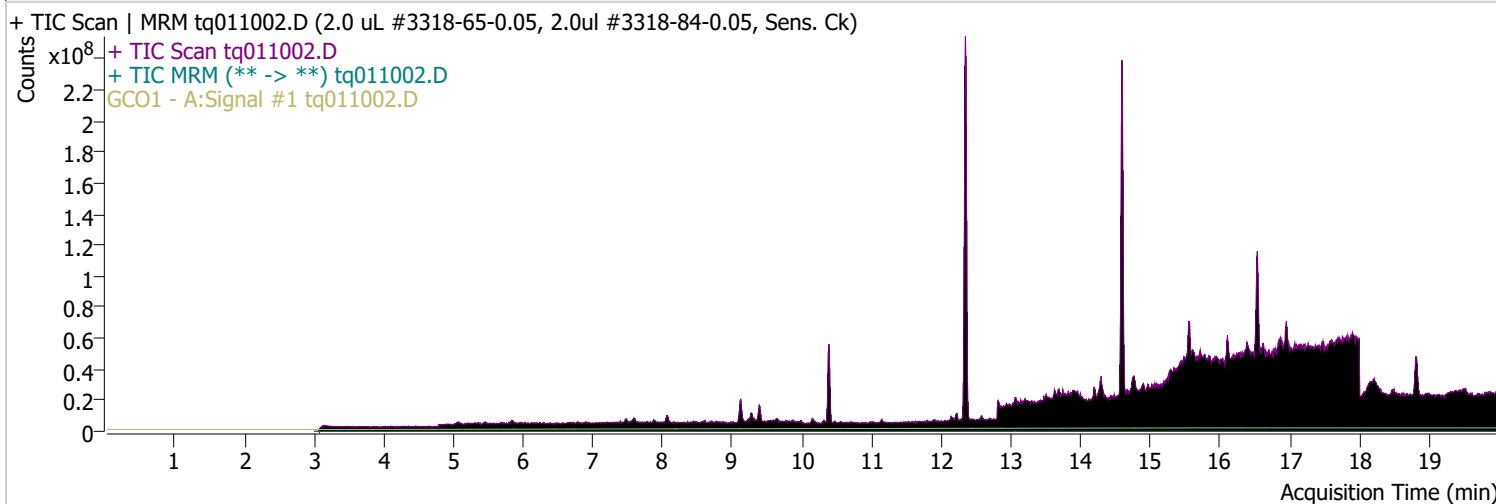
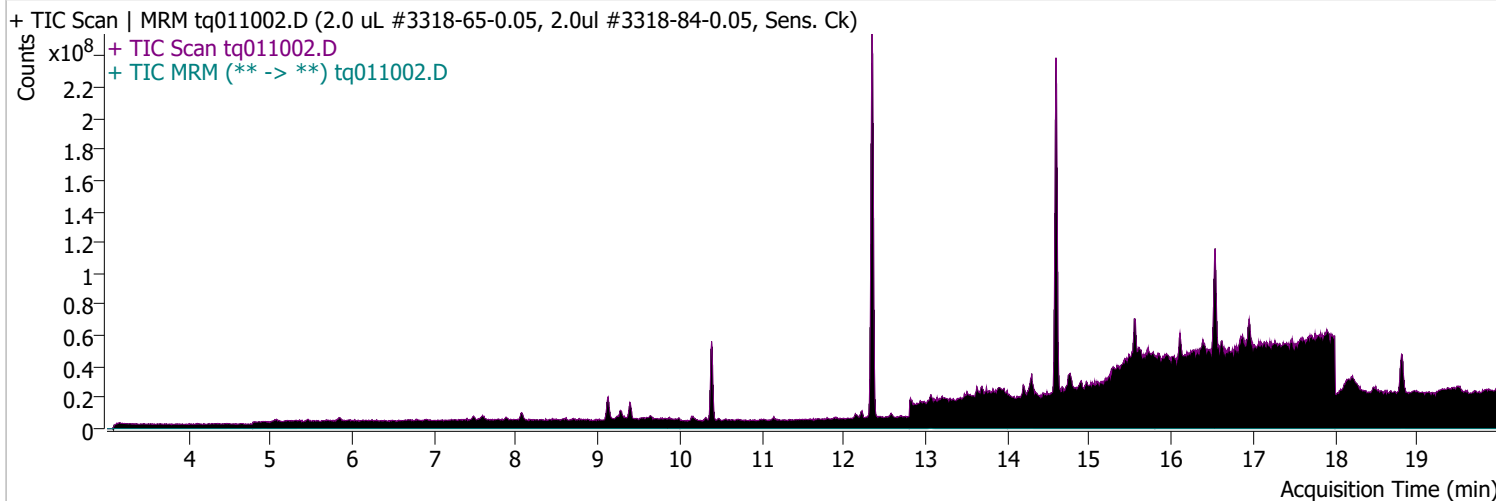
## PFOA



# Quantitative Analysis Sample Report

Batch Path	D:\MassHunter\GCMS\1\data\10jan23\QuantResults\10jan23.batch.bin		
Analysis Time	1/18/2023 2:24 PM	Analyst Name	TAI\us32_usr_ins22923
Report Time	1/18/2023 2:34:58 PM	Reporter Name	TAI\us32_usr_ins22923
Last Calib Update	1/3/2023 2:39 PM	Batch State	Processed
Quant Batch Version	10.1	Quant Report Version	10.1
Acq. Time	1/10/2023 8:36 AM	Data File	tq011002.D
Sample Type	QC	Sample Name	2.0 uL #3318-65-0.05, 2.0uL #3318-84-0.05, Sens. Ck
Dilution	1	Acq. Method	tq22m1227

## Sample Chromatogram

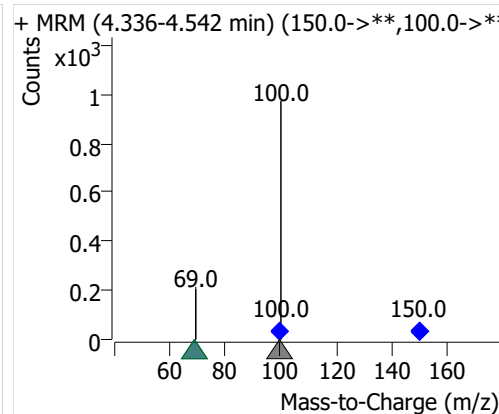
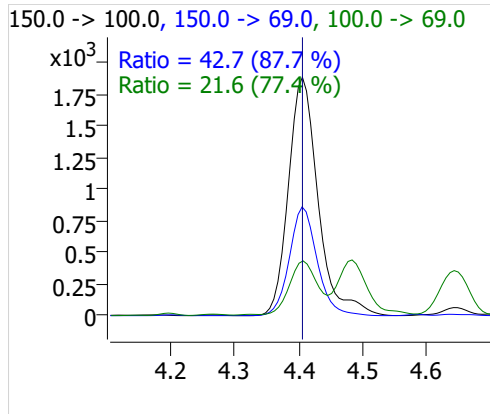
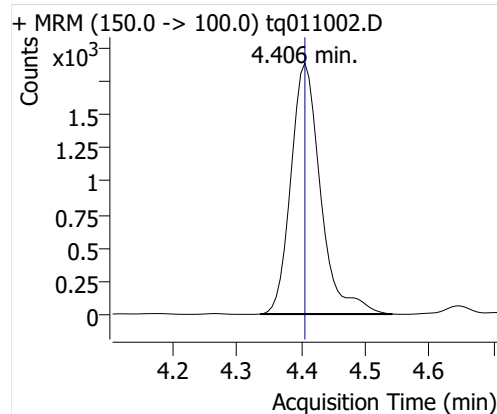


Compound	ISTD	RT	Resp.	ISTD Resp.	Resp. Ratio	Final Conc	Units
PFBA	6:2 FTOH-C13	4.406	6062	52321	0.1159	0.0346	ng

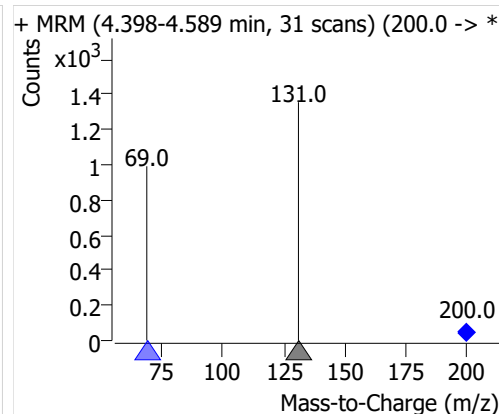
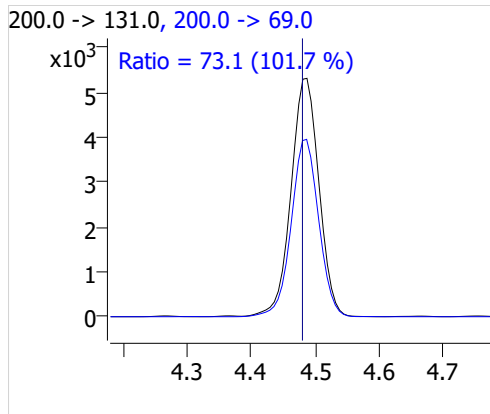
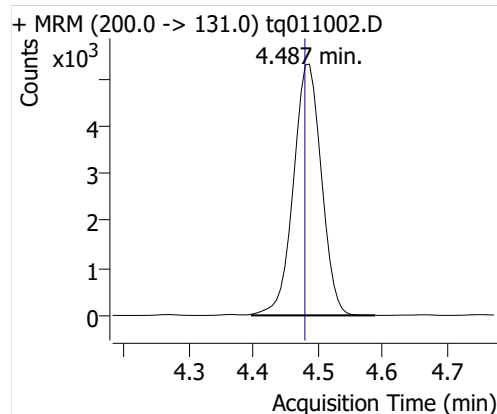
# Quantitative Analysis Sample Report

Compound	ISTD	RT	Resp.	ISTD Resp.	Resp. Ratio	Final Conc	Units
PFPeA	6:2 FTOH-C13	4.487	16040	52321	0.3066	0.1031	ng
PFHxA	6:2 FTOH-C13	4.645	7966	52321	0.1523	0.1100	ng
PFHpA	6:2 FTOH-C13	4.920	5103	52321	0.0975	0.1033	ng
PFOA	6:2 FTOH-C13	5.348	3779	52321	0.0722	0.1197	ng

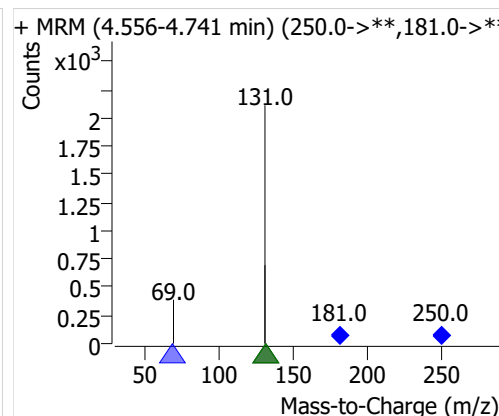
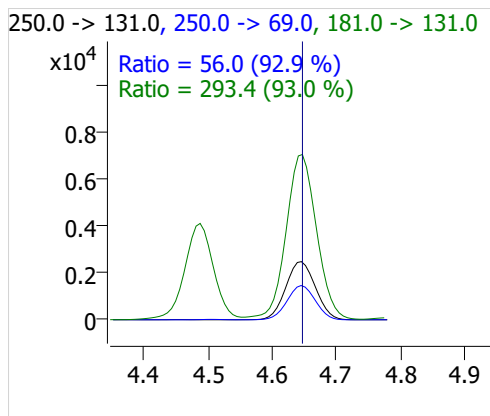
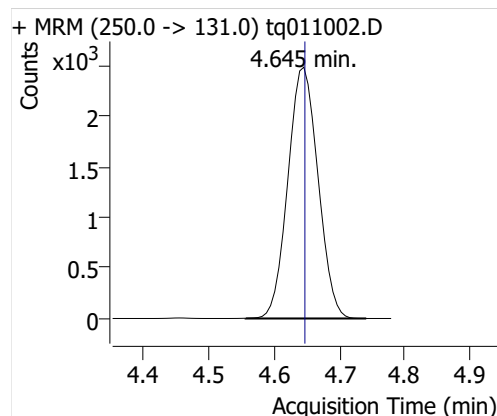
## PFBA



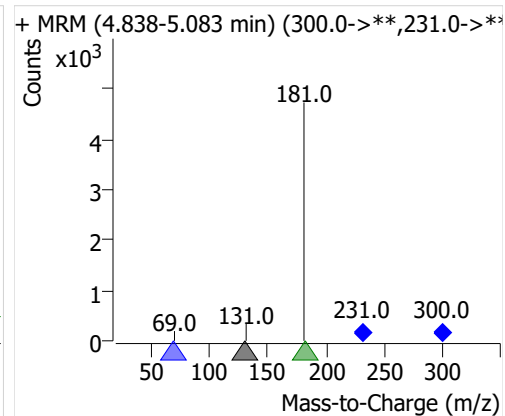
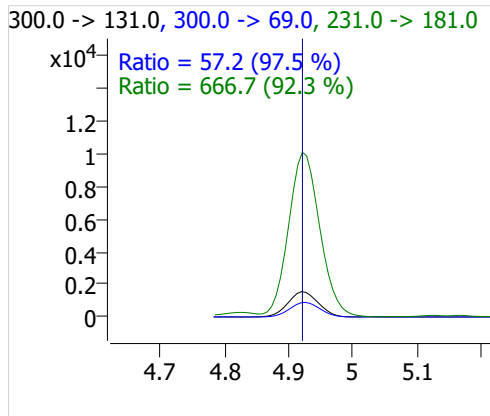
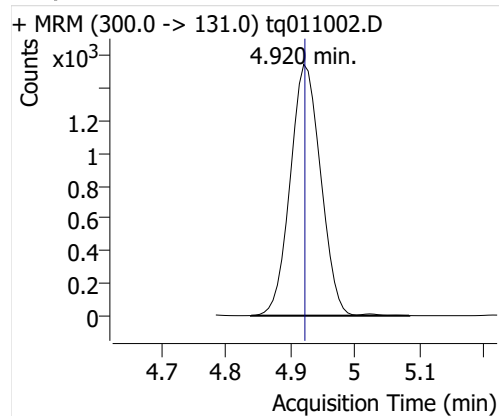
## PFPeA



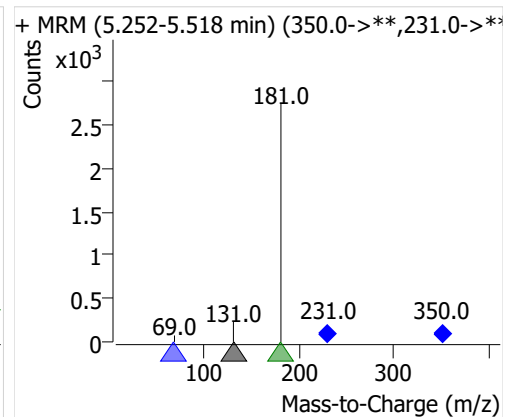
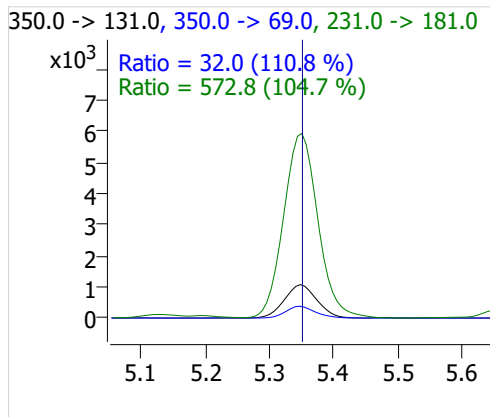
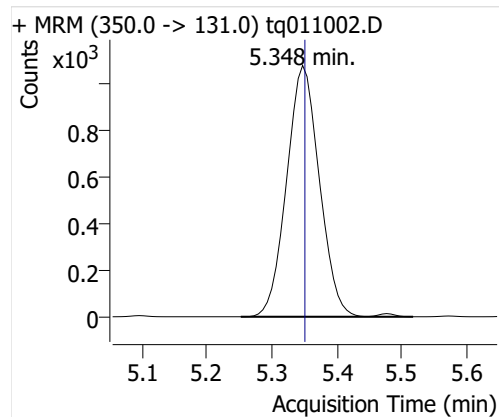
## PFHxA



## PFHpA



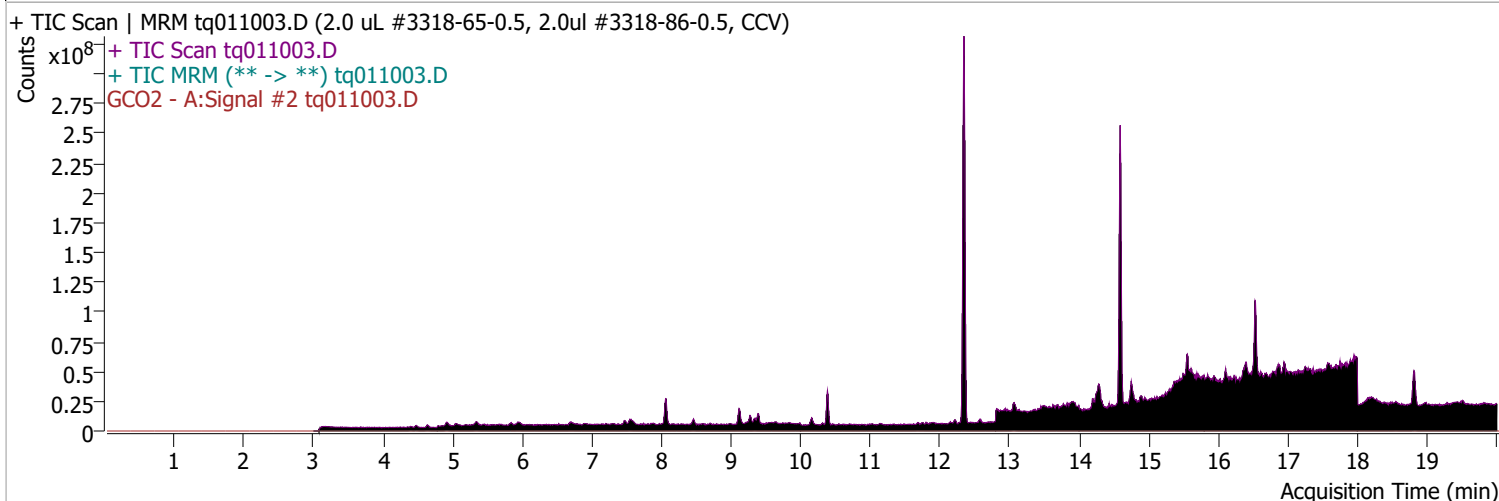
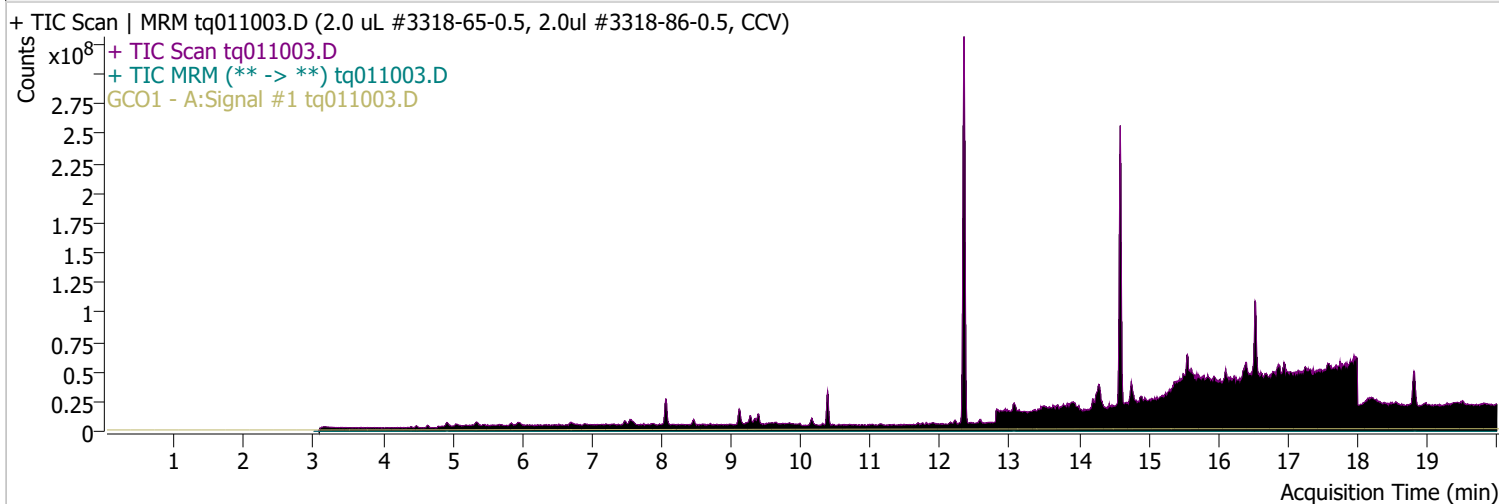
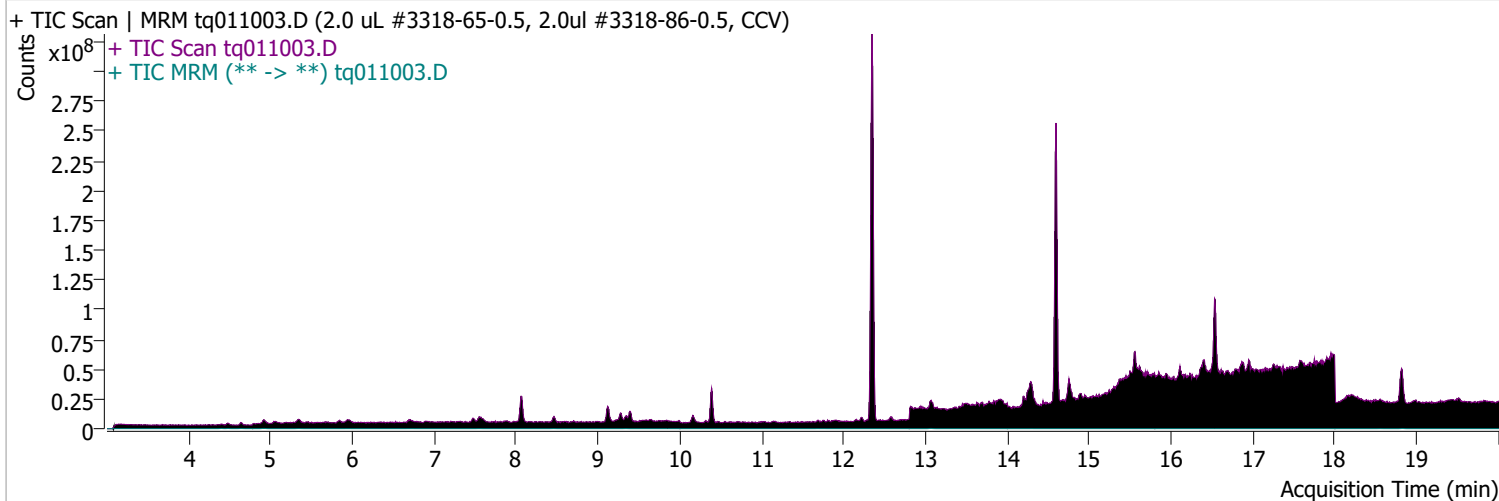
## PFOA



# Quantitative Analysis Sample Report

Batch Path	D:\MassHunter\GCMS\1\data\10jan23\QuantResults\10jan23.batch.bin		
Analysis Time	1/18/2023 2:24 PM	Analyst Name	TAI\us32_usr_ins22923
Report Time	1/18/2023 2:34:58 PM	Reporter Name	TAI\us32_usr_ins22923
Last Calib Update	1/3/2023 2:39 PM	Batch State	Processed
Quant Batch Version	10.1	Quant Report Version	10.1
Acq. Time	1/10/2023 9:00 AM	Data File	tq011003.D
Sample Type	CC	Sample Name	2.0 uL #3318-65-0.5, 2.0ul #3318-86-0.5, CCV
Dilution	1	Acq. Method	tq22m1227

## Sample Chromatogram

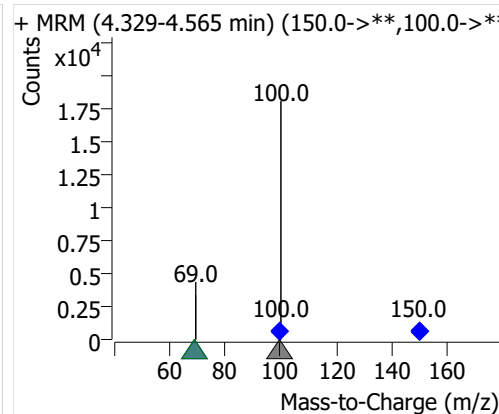
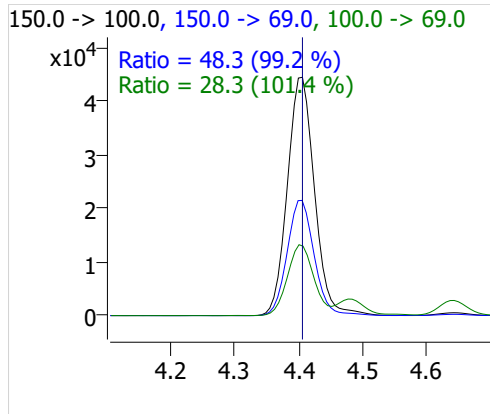
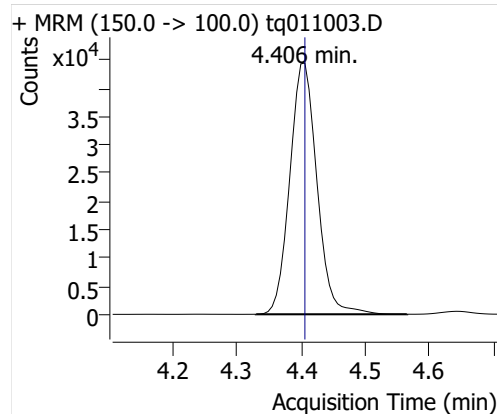


Compound	ISTD	RT	Resp.	ISTD Resp.	Resp. Ratio	Final Conc	Units
PFBA	6:2 FTOH-C13	4.406	131098	47712	2.7477	0.8200	ng

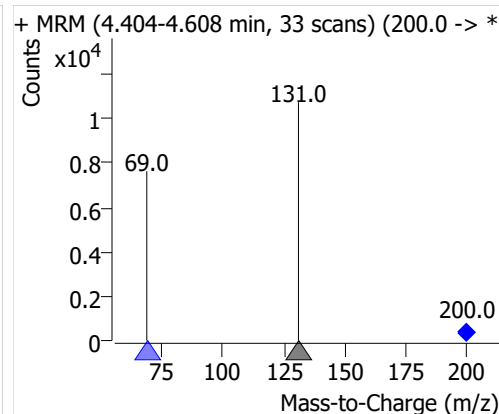
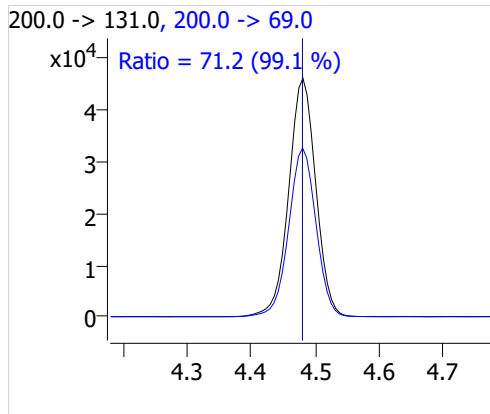
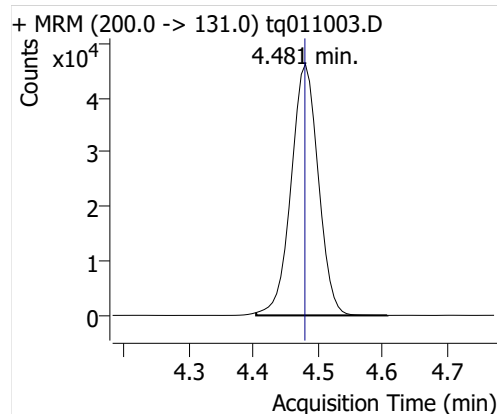
# Quantitative Analysis Sample Report

Compound	ISTD	RT	Resp.	ISTD Resp.	Resp. Ratio	Final Conc	Units
PFPeA	6:2 FTOH-C13	4.481	135437	47712	2.8387	0.9548	ng
PFHxA	6:2 FTOH-C13	4.639	64933	47712	1.3610	0.9831	ng
PFHpA	6:2 FTOH-C13	4.920	43941	47712	0.9210	0.9756	ng
PFOA	6:2 FTOH-C13	5.348	27334	47712	0.5729	0.9492	ng

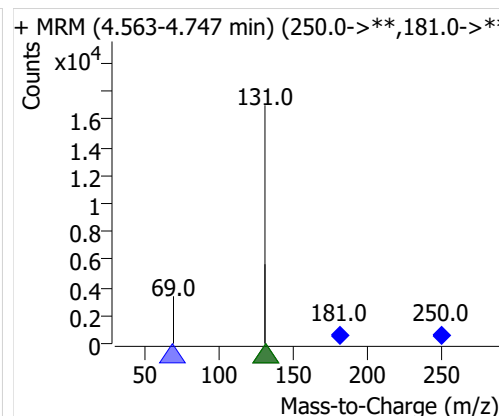
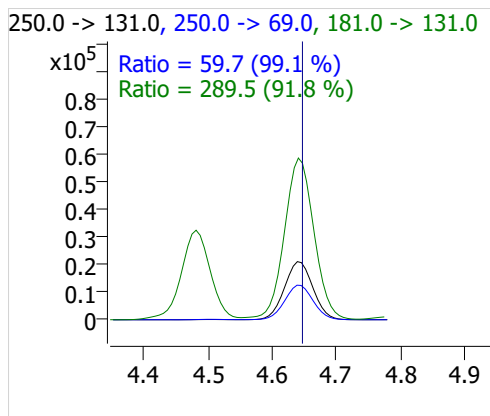
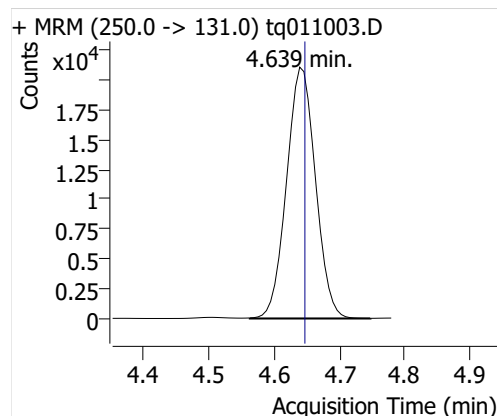
## PFBA



## PFPeA

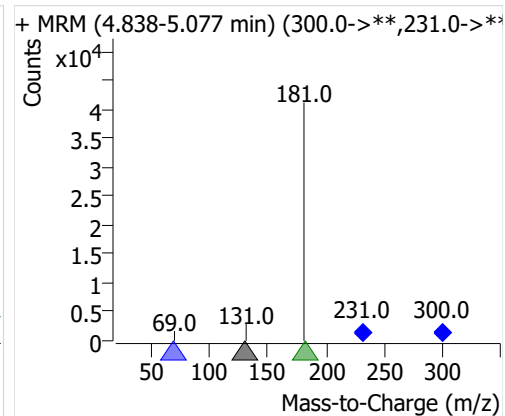
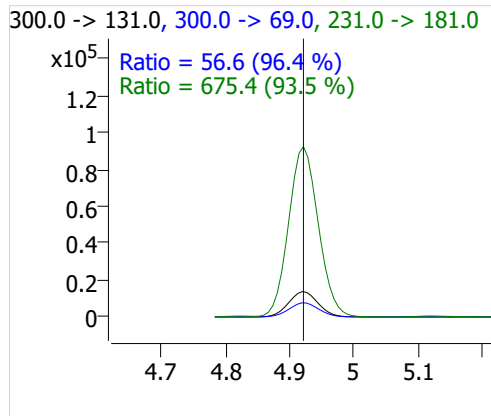
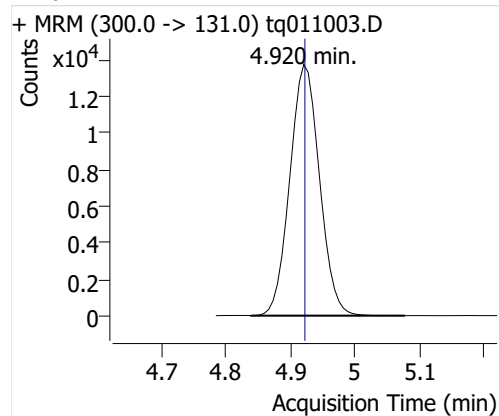


## PFHxA

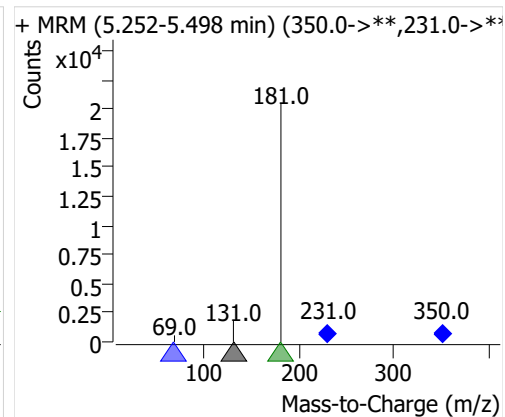
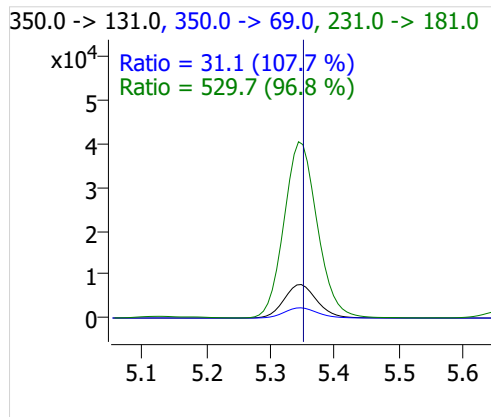
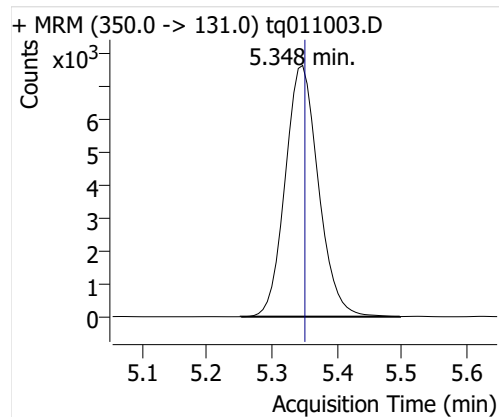




## PFHpA



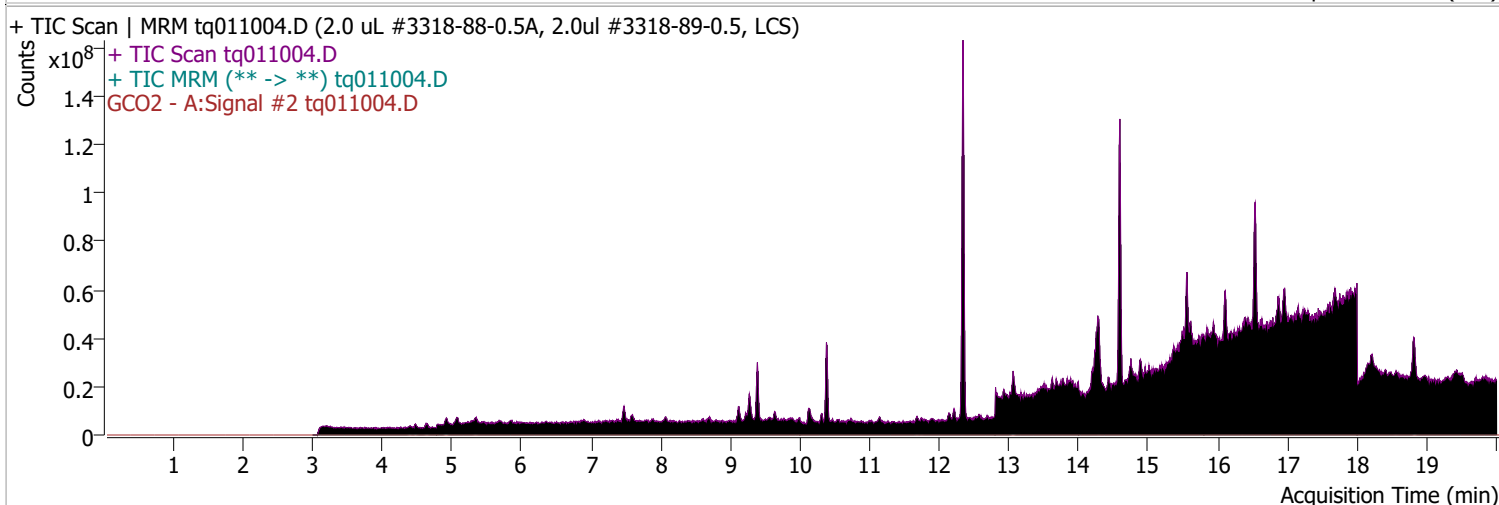
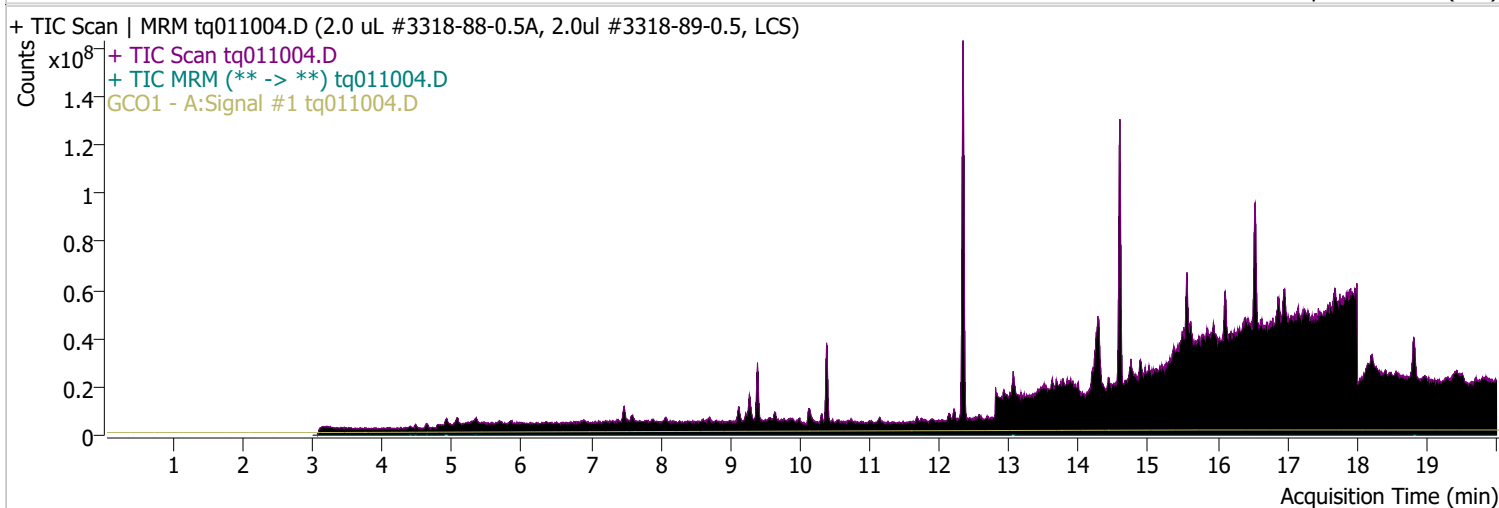
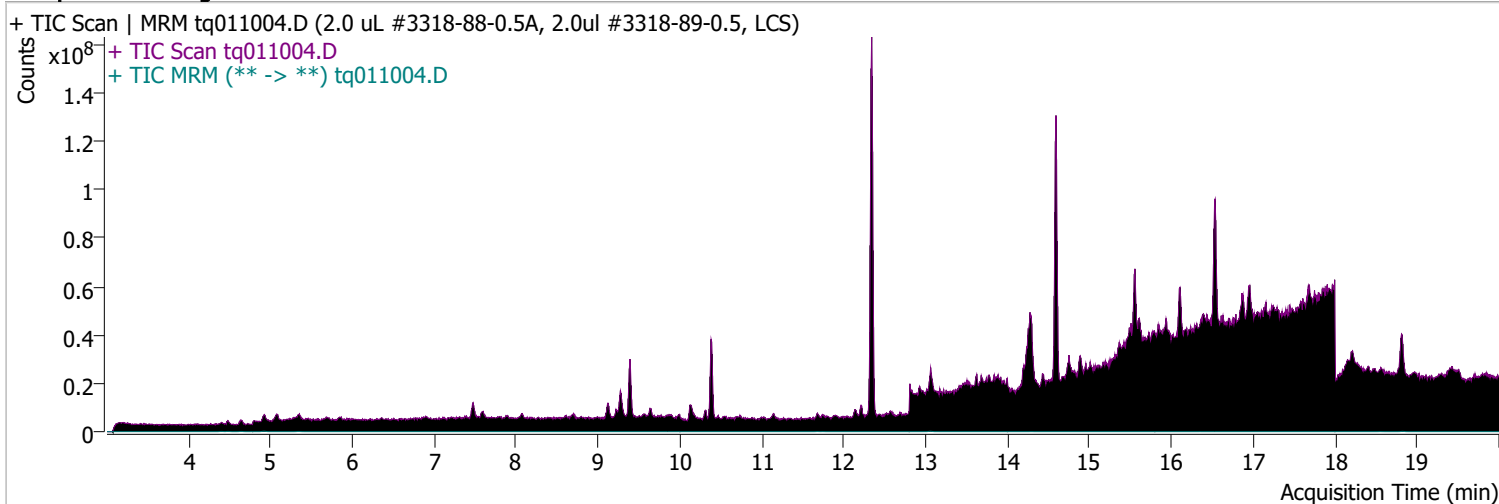
## PFOA



# Quantitative Analysis Sample Report

Batch Path	D:\MassHunter\GCMS\1\data\10jan23\QuantResults\10jan23.batch.bin		
Analysis Time	1/18/2023 2:24 PM	Analyst Name	TAI\us32_usr_ins22923
Report Time	1/18/2023 2:34:59 PM	Reporter Name	TAI\us32_usr_ins22923
Last Calib Update	1/3/2023 2:39 PM	Batch State	Processed
Quant Batch Version	10.1	Quant Report Version	10.1
Acq. Time	1/10/2023 9:23 AM	Data File	tq011004.D
Sample Type	QC	Sample Name	2.0 uL #3318-88-0.5A, 2.0ul #3318-89-0.5, LCS
Dilution	1	Acq. Method	tq22m1227

## Sample Chromatogram

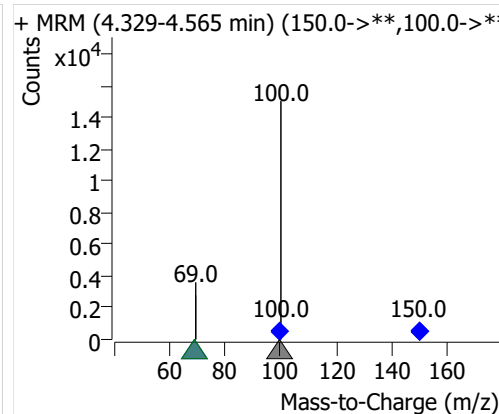
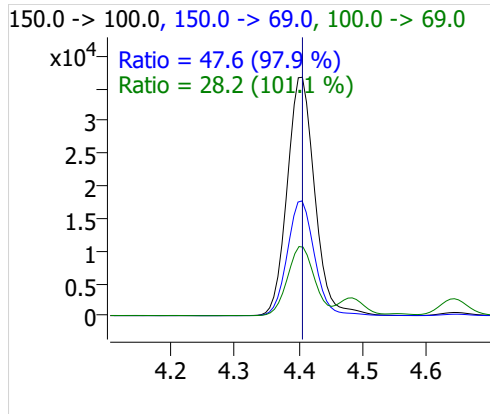
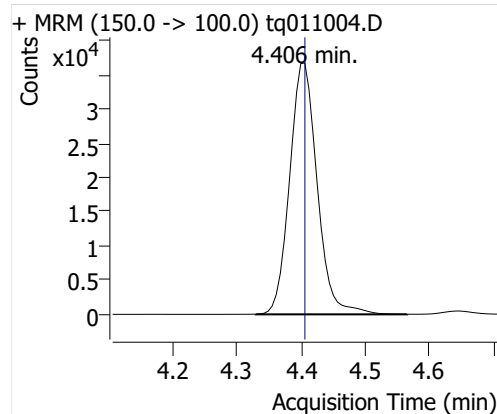


Compound	ISTD	RT	Resp.	ISTD Resp.	Resp. Ratio	Final Conc	Units
PFBA	6:2 FTOH-C13	4.406	109543	47026	2.3294	0.6951	ng

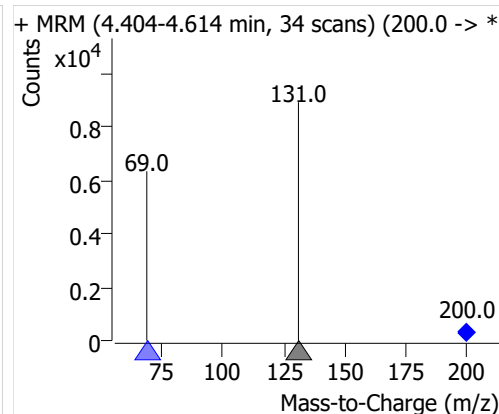
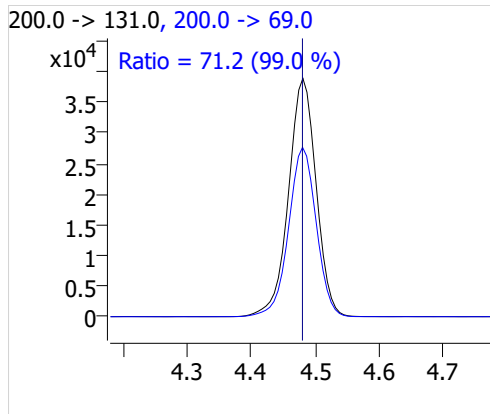
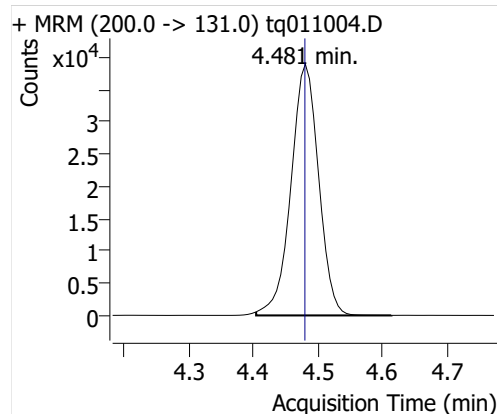
# Quantitative Analysis Sample Report

Compound	ISTD	RT	Resp.	ISTD Resp.	Resp. Ratio	Final Conc	Units
PFPeA	6:2 FTOH-C13	4.481	116242	47026	2.4718	0.8314	ng
PFHxA	6:2 FTOH-C13	4.639	58934	47026	1.2532	0.9053	ng
PFHpA	6:2 FTOH-C13	4.920	39017	47026	0.8297	0.8789	ng
PFOA	6:2 FTOH-C13	5.348	22491	47026	0.4783	0.7924	ng

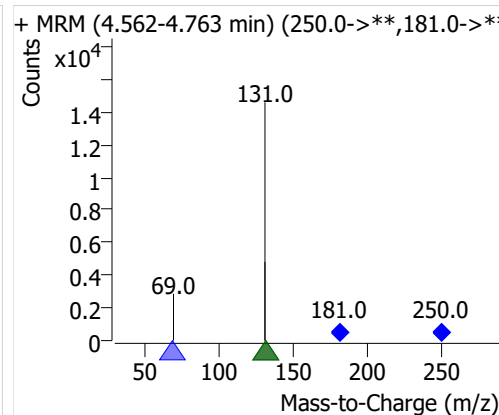
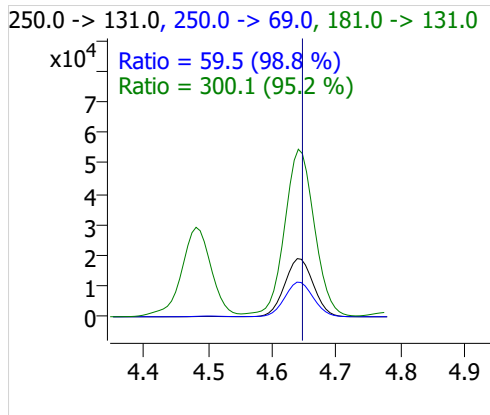
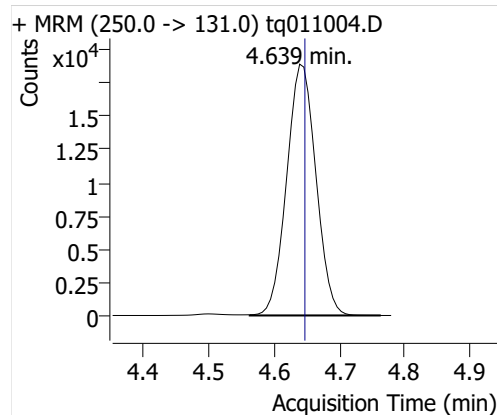
## PFBA



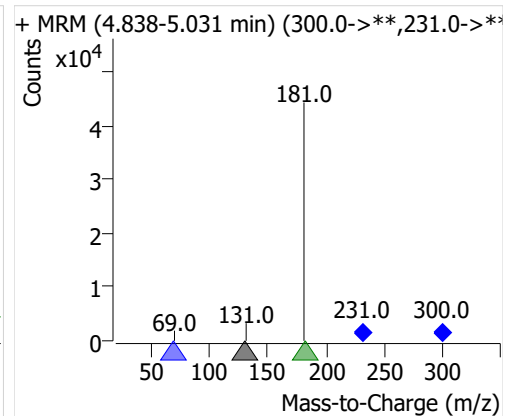
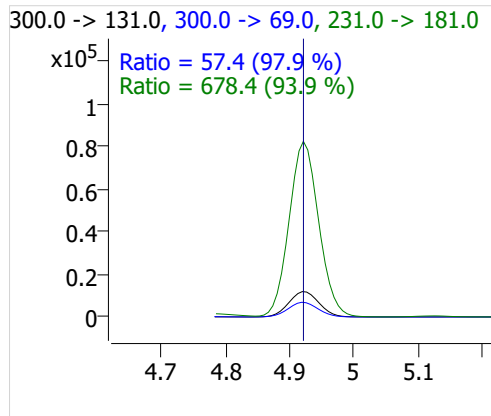
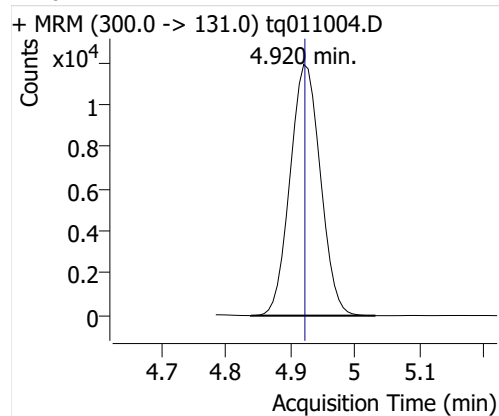
## PFPeA



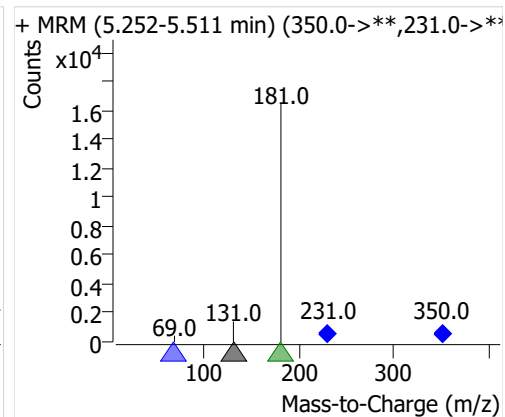
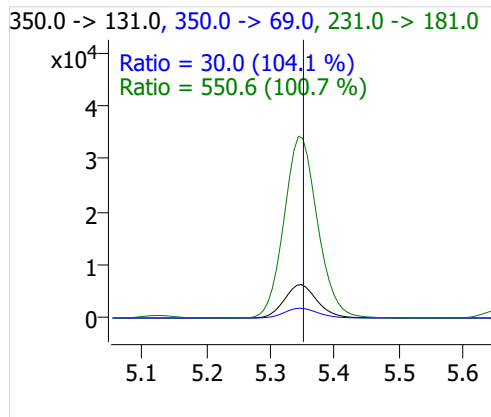
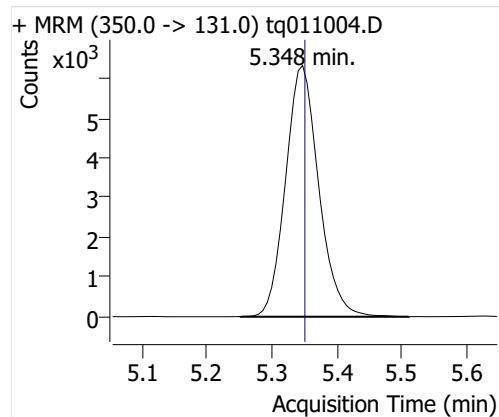
## PFHxA



## PFHpA



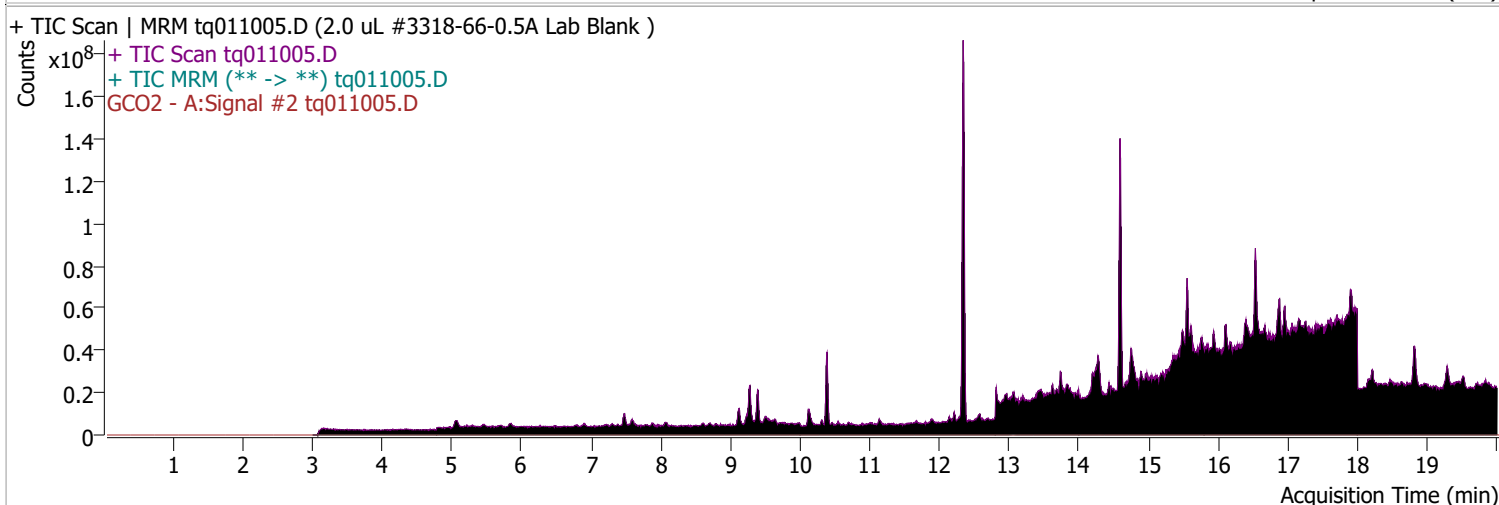
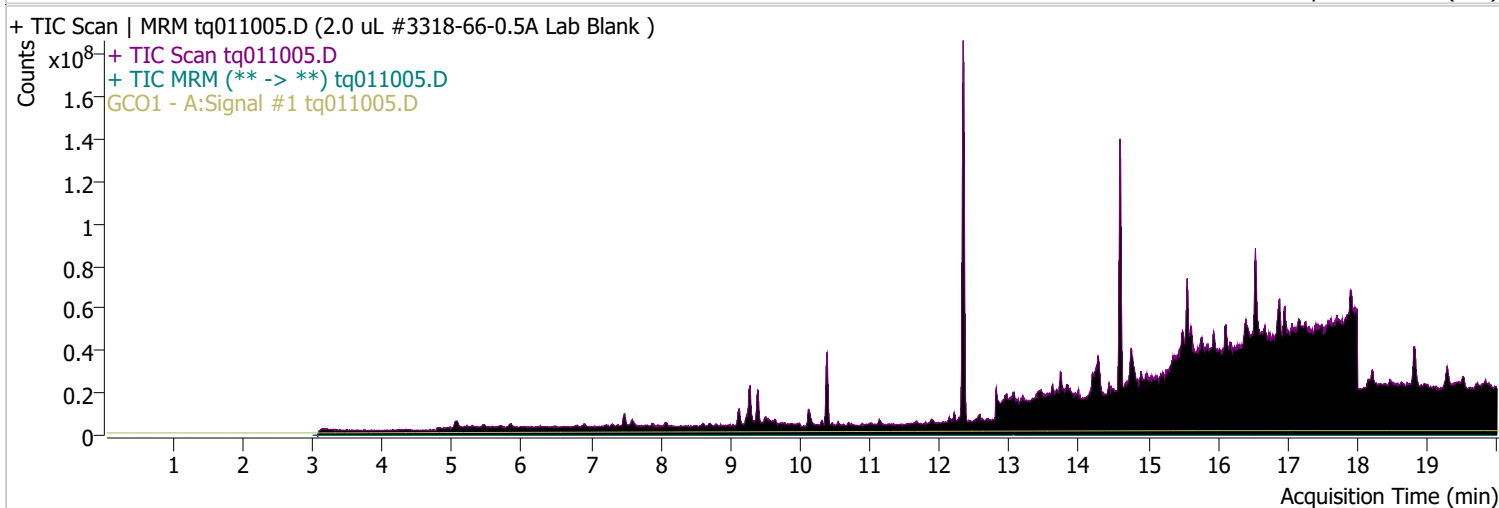
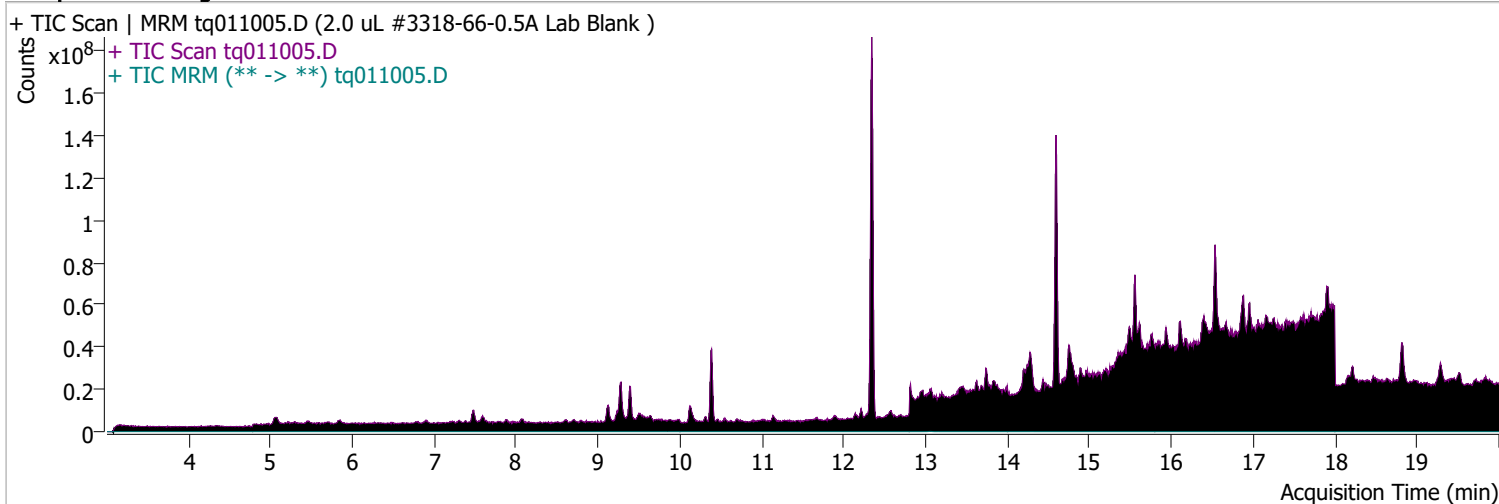
## PFOA



# Quantitative Analysis Sample Report

Batch Path	D:\MassHunter\GCMS\1\data\10jan23\QuantResults\10jan23.batch.bin		
Analysis Time	1/18/2023 2:24 PM	Analyst Name	TAI\us32_usr_ins22923
Report Time	1/18/2023 2:35:00 PM	Reporter Name	TAI\us32_usr_ins22923
Last Calib Update	1/3/2023 2:39 PM	Batch State	Processed
Quant Batch Version	10.1	Quant Report Version	10.1
Acq. Time	1/10/2023 10:30 AM	Data File	tq011005.D
Sample Type	Sample	Sample Name	2.0 uL #3318-66-0.5A Lab Blank
Dilution	1	Acq. Method	tq22m1227

## Sample Chromatogram

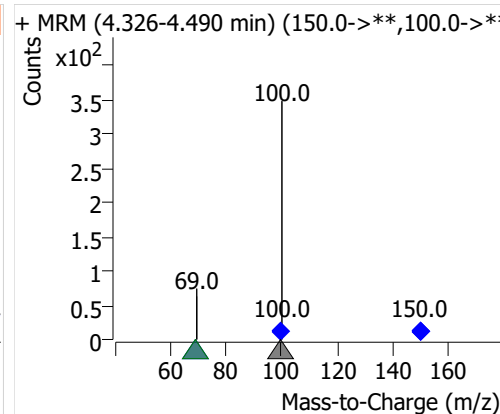
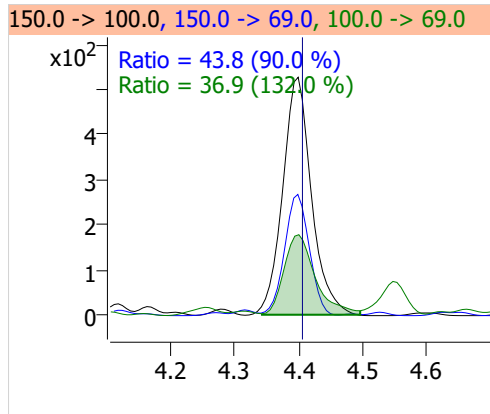
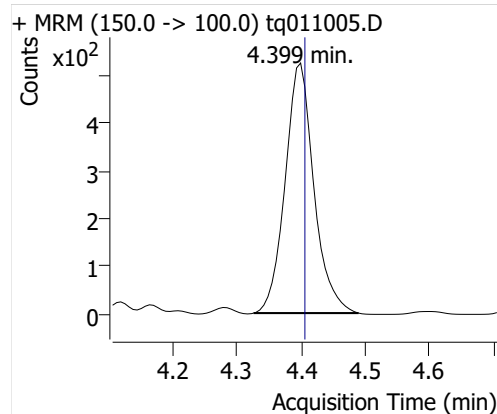


Compound	ISTD	RT	Resp.	ISTD Resp.	Resp. Ratio	Final Conc	Units
PFBA	6:2 FTOH-C13	4.399	1633	48666	0.0336	0.0100	ng

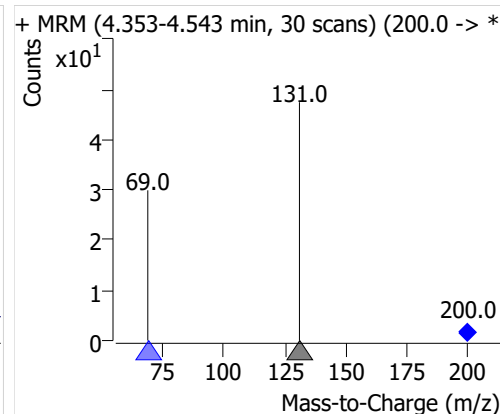
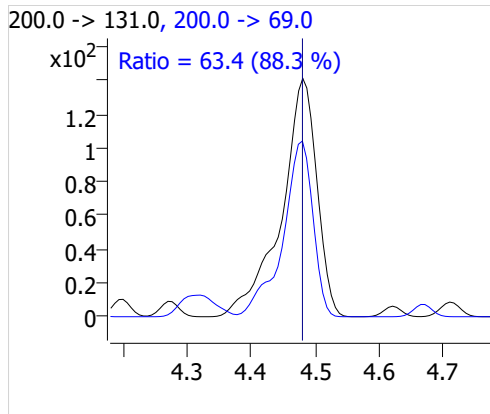
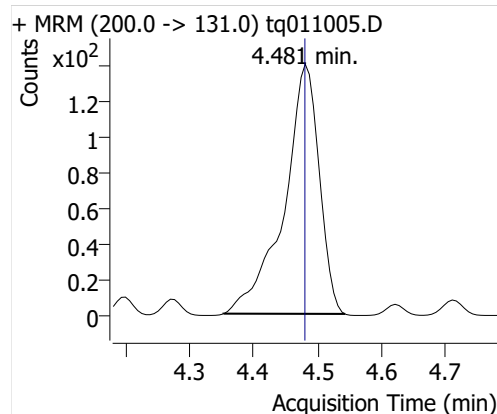
# Quantitative Analysis Sample Report

Compound	ISTD	RT	Resp.	ISTD Resp.	Resp. Ratio	Final Conc	Units
PFPeA	6:2 FTOH-C13	4.481	534	48666	0.0110	0.0037	ng
PFHxA	6:2 FTOH-C13	4.651	166	48666	0.0034	0.0025	ng
PFHpA	6:2 FTOH-C13	4.913	79	48666	0.0016	0.0017	ng
PFOA	6:2 FTOH-C13	5.341	593	48666	0.0122	0.0202	ng

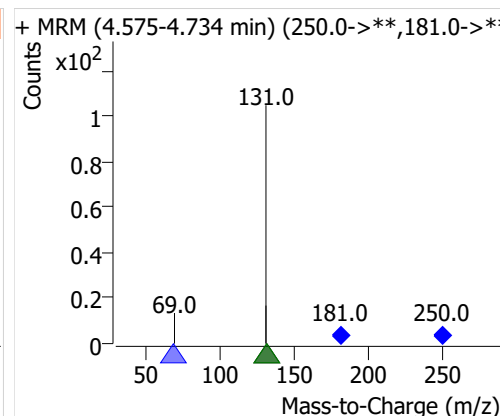
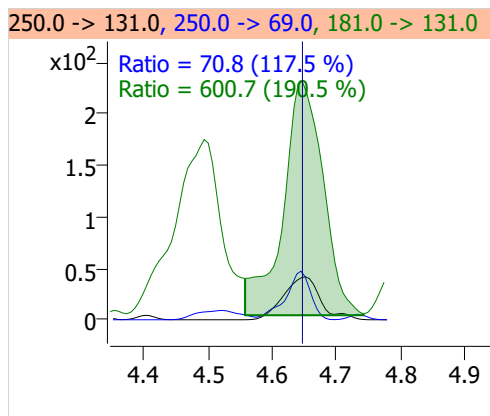
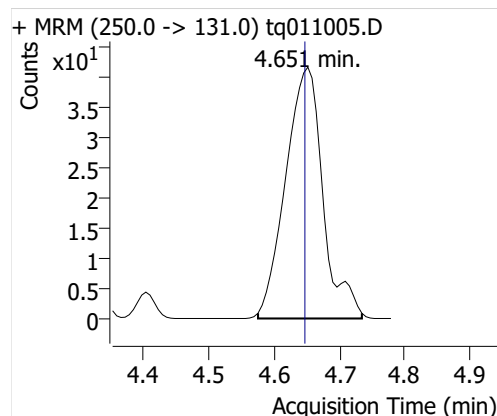
## PFBA



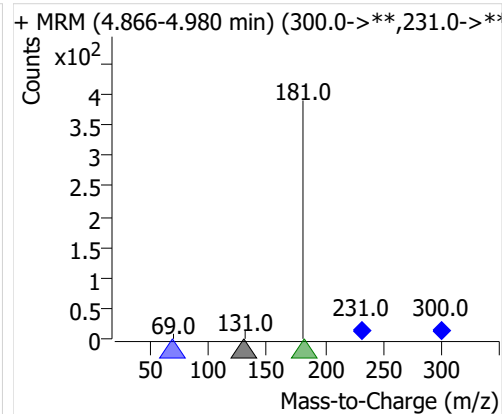
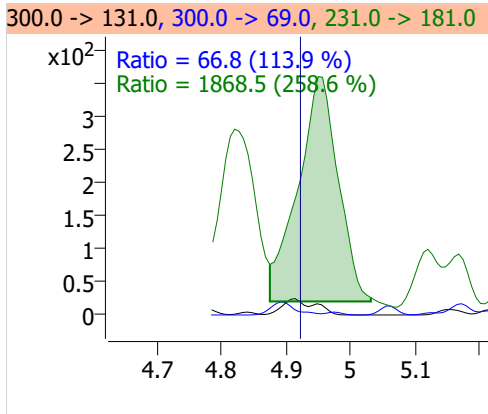
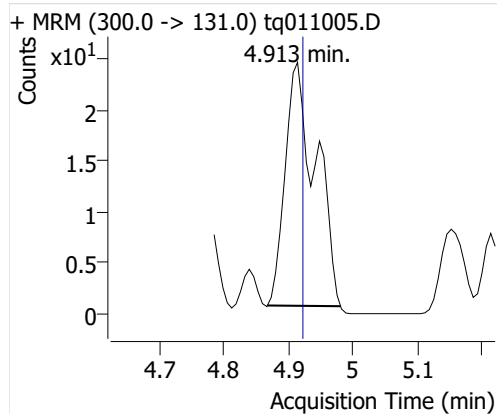
## PFPeA



## PFHxA



## PFH<sub>2</sub>PA



## PFOA

